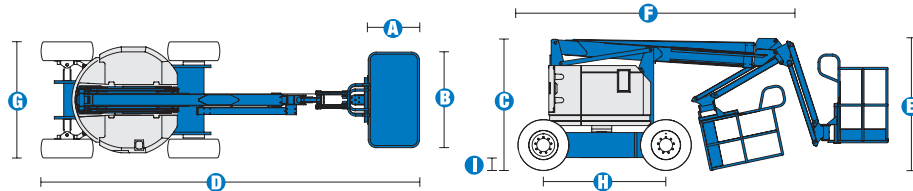
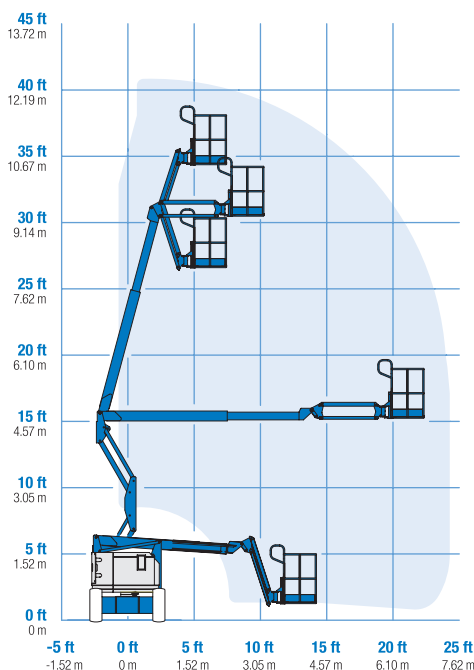


### Specifications



### RANGE OF MOTION Z™-34/22 DC/Bi



MODELS	Z™-34/22 DC		Z™-34/22 Bi-Energy	
MEASUREMENTS	US	Metric	US	Metric
Working height maximum*	40 ft 6 in	12.52 m	40 ft 6 in	12.52 m
Platform height maximum	34 ft 6 in	10.52 m	34 ft 6 in	10.52 m
Horizontal reach maximum	22 ft 3 in	6.78 m	22 ft 3 in	6.78 m
Up and over clearance - at platform at jib	15 ft	4.57 m	15 ft	4.57 m
	14 ft 11 in	4.55 m	14 ft 11 in	4.55 m
<b>A</b> Platform length	2 ft 6 in	.76 m	2 ft 6 in	.76 m
<b>B</b> Platform width	4 ft 8 in	1.42 m	4 ft 8 in	1.42 m
<b>C</b> Height - stowed	6 ft 7 in	2.00 m	6 ft 7 in	2.00 m
<b>D</b> Length - stowed	18 ft 6 in	5.64 m	18 ft 6 in	5.64 m
<b>E</b> Storage height	7 ft 5 in	2.26 m	7 ft 5 in	2.26 m
<b>F</b> Storage length	13 ft 5 in	4.08 m	13 ft 5 in	4.08 m
<b>G</b> Width	5 ft 8 in	1.73 m	5 ft 8 in	1.73 m
<b>H</b> Wheelbase	6 ft 2 in	1.88 m	6 ft 2 in	1.88 m
<b>I</b> Ground clearance - center	6 in	.15 m	6 in	.15 m

### PRODUCTIVITY

Lift capacity	500 lbs	227 kg	500 lbs	227 kg
Platform rotation	180°		180°	
Vertical jib rotation	139°		139°	
Turntable rotation	355° non-continuous		355° non-continuous	
Turntable tailswing	zero		zero	
Drive speed - stowed	4.0 mph	6.4 km/h	4.0 mph	6.4 km/h
Drive speed - raised**	.68 mph	1.1 km/h	.68 mph	1.1 km/h
Gradeability - stowed***	30%		30%	
Turning radius - inside	5 ft 9 in	1.75 m	5 ft 9 in	1.75 m
Turning radius - outside	13 ft 1 in	3.98 m	13 ft 1 in	3.98 m
Controls	24V DC proportional		24V DC proportional	
Tires - air filled	9 x 14.5 in		9 x 14.5 in	

### POWER

Power Source	48V DC (eight 6 V batteries 315 Ah capacity)	48V DC (eight 6 V batteries 315 Ah capacity) with Kubota 12 Hp (8.9 kw) diesel driven alternator
Auxiliary Power Unit	24V DC	24V DC
Hydraulic Tank Capacity	4 gal 15.1 L	4 gal 15.1 L

### WEIGHT\*\*\*\*

	11,000 lbs 4,990 kg	12,000 lbs 5,443 kg
--	---------------------	---------------------

### STANDARDS COMPLIANCE

ANSI A92.5, CSA B354.4, CE Compliance, AS 1418.10, PB-10-611-03

\* The metric equivalent of working height adds 2 m to platform height. U.S. adds 6 ft to platform height.  
 \*\* In lift mode \*(platform raised), the machine is designed to operate on firm, level surfaces only.  
 \*\*\* Gradeability applies to driving on slopes. See operator's manual for details regarding slope ratings.  
 \*\*\*\* Weight will vary depending on options and/or country standards.

## Features

### EASILY CONFIGURED TO MEET YOUR NEEDS

#### PLATFORM OPTIONS

- Steel 4 ft 8 in (1.42 m) (standard)
- Steel 4 ft (1.22 m)

#### JIB

- 4 ft (1.22 m) jib boom

#### POWER

- 48V DC power source

#### BATTERY CHARGING OPTIONS

- 25 Amp 48V on-board charger
- On-board alternator powered by Kubota diesel 12 hp (8.9 kW) engine

#### DRIVE

- 2WD

#### TIRE OPTIONS

- Industrial air-filled (standard)
- Industrial foam-filled
- Industrial non-marking air-filled
- Industrial non-marking foam-filled
- Sealant treated air-filled

### STANDARD FEATURES

#### MEASUREMENTS

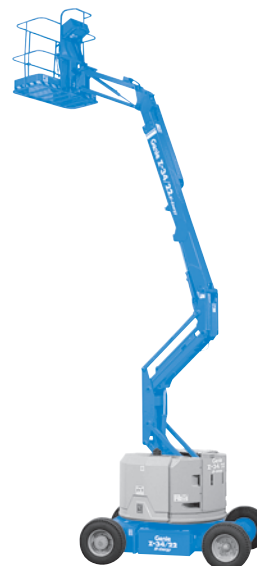
- 40 ft 6 in (12.52 m) working height
- 22 ft 3 in (6.78 m) horizontal reach
- 14 ft 11 in (4.55 m) up and over clearance
- Up to 500 lb (227 kg) lift capacity

#### PRODUCTIVITY

- 4 ft (1.22 m) jib boom with 139° working range
- Self-leveling platform
- Hydraulic platform rotation
- Fully proportional controls
- Drive enable
- AC power cord to platform
- Horn
- Hour meter
- Tilt alarm
- 355° non-continuous turntable rotation
- Locking turntable covers (Bi-Energy only)
- Zero tailswing
- Sep-Ex drive system

#### POWER

- 48V deep cycle battery pack
- 24V DC auxiliary power
- Battery charge indicator (BCI)



### OPTIONS & ACCESSORIES

#### PRODUCTIVITY

- Platform swing gate
- Half-mesh platform inserts with swing gate
- Air line to platform
- Deluxe aircraft protection package
- Basic hostile environment kit (Bi-Energy only)
- Tool tray
- Fluorescent tube caddy
- Pipe cradle (pair)
- Alarm package
- Platform work lights
- Lockable platform control box covers
- Arctic oil

#### POWER

- EE rating
- Low voltage interrupt with BCI
- Cold Start Package (Bi-Energy only)
- Retained key selector switch

### Genie United States

18340 NE 76th Street  
P.O. Box 97030  
Redmond, Washington 98073-9730

Telephone **(425) 881-1800**  
Toll Free in USA/Canada **800-536-1800**  
Fax (425) 883-3475

### Genie Europe

The Maltings  
Wharf Road  
Grantham NG31 6BH  
U.K.

Telephone **+44 (0)1476 584333**  
Fax +44 (0)1476 584334

Email: [infoeurope@genieind.com](mailto:infoeurope@genieind.com)

### Distributed By: