



# Concrete Pumps

Mayco Pump Division



The most popular small line concrete pump available today



Concrete/Grout Pump



Concrete/Shotcrete Pump



Concrete/Shotcrete/Mudjacking Pump

# Mayco C-30HDN Small line concrete pump

Mayco's C-30HDN has been in production for almost 40 years and is still the most popular small line concrete pump available today.

This versatile piston pump will easily handle up to 1/2 inch minus aggregate and pump up to 25 cubic yards per hour. The C-30HDN handles a variety of mix designs including harsh, stiff and low slump mixes.

A direct flow manifold with oversized valves assures maximum volume and minimizes the chance of blockages and cavitation.

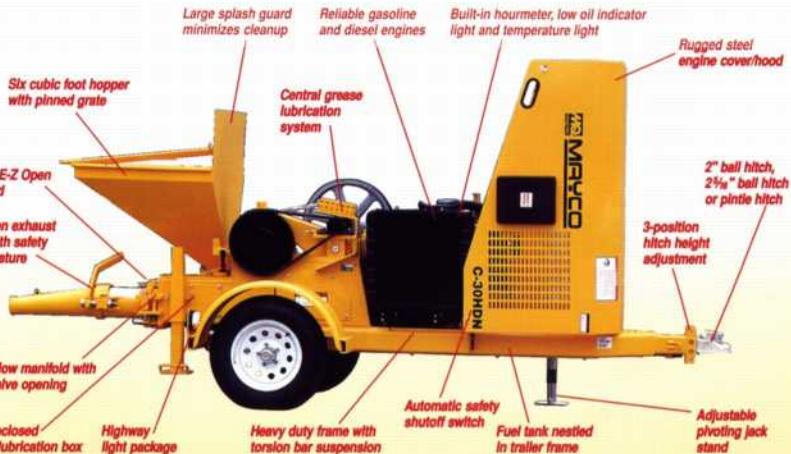
The C-30HDN is engineered to require only minimal maintenance and upkeep. All components are manufactured from the highest quality materials and built to exacting specifications to maximize service life.

Service is simplified by a central lubrication system that enables the operator to quickly grease every critical service point. A fully enclosed lube box provides positive lubrication and can be easily cleaned out.

*Mayco replacement parts are reasonably priced and readily available. Additionally, our nationwide network of dealers is ready to provide service and technical support no matter where your job is located.*



The C-30HDN is ideal for shotcrete applications of stiff, low slump mixes — swimming pools, ditch linings, soil stabilization, walls and more.



Complete specifications appear on the back cover.

Mayco pumps are designed to increase productivity and maximize profits.

- **Powerful engines** — 39 HP Nissan gasoline or 30 HP Deutz diesel engines.
- **Heavy-duty centrifugal clutch** — for longer life.
- **Central lubrication system** — enclosed lubrication box provides clean, positive piston lubrication.
- **Remote controls** — hardwired 125' cable or an optional wireless remote control.
- **All steel engine cover (hood)**— rugged design resists abuse.
- **Three-speed volume control** — enables the operator to control the flow.
- **E-Z Open™ Manifold** — hinged for quick access to seats, cylinders, and piston cups. Easy open reducer.
- **Longer frame with fuel cell inside frame.**
- **Full featured highway light package.**
- **3" x 90° Elbow** — with heavy duty raised ends.
- **3" x 2" Reducer** — with heavy duty raised ends.
- **Two 3" adjustable snap couplings**
- **Control box features engine hourmeter, temperature warning light, battery warning light.**



**Pumping services prefer the C-30HDN — profit-producing pump**

- **Masonry grouting**
- **Shotcrete (wet gunning)**
- **Swimming pools**
- **Slope stabilization**
- **Channel lining — flood control**
- **Vault and crypt construction**
- **Lining — irrigation ditches & reservoirs**
- **Foundation work**
- **Slabs and basements**
- **Swimming pool decks and patios**
- **Cellular foam concrete**
- **Concrete pilings**
- **Column work**
- **Pressure grouting and mud jacking**



Central lubrication system for quick and easy maintenance.



Innovative E-Z open hinged manifold and reducer; no special tools required for service or maintenance.



3" x 2" reducer is standard; swings up and away for easy travel and cleaning

Full specifications are on the back cover.

# Mayco ST-45 Mid-range structural concrete pump

**Big pump performance... reasonably priced!**



- Variable volume output from 0 to 45 cubic yards per hour (0 to 35 m<sup>3</sup>/hr)
- Designed to handle the larger ¾", 1" and up to 1½" aggregate (38 mm)
- Concrete piston face pressure of 875 psi (60 bar)
- "Cushioned" hydraulic cylinders for a smoother pumping stroke
- Extremely versatile — use for refractory, shotcrete, masonry block fill, slabs, footings, lightweight mixes
- Simplified reverse shuttle tube pumping — for smoother operation
- Full flow, cast steel shuttle-tube for longer life
- Hard faced wear components for longer life and lower maintenance costs



*The Mayco ST-45 — with its longer, slower stroke, and increased horsepower — will handle the toughest, low-slump shotcrete mixes.*



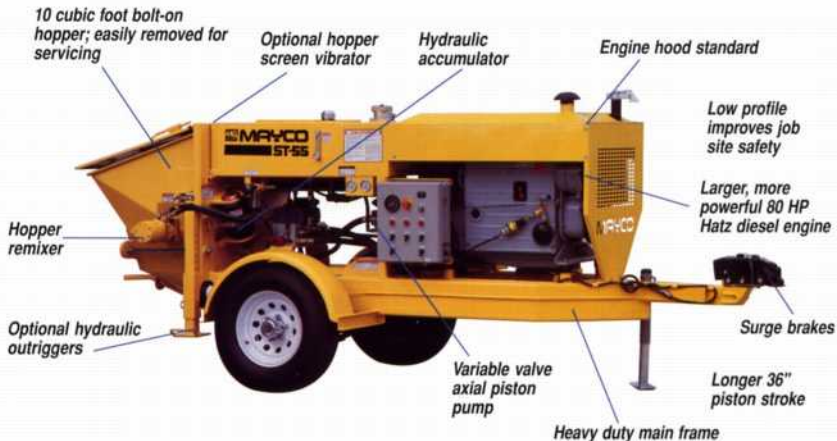
*Too much rock? Poor quality pumping sand? The Mayco ST-45 is extremely efficient in handling tough concrete pump mixes.*



*High volume shotcreting (wetgunning) with the adaptable ST-45 is all in a day's work for this versatile concrete pump.*

# Mayco ST-55 Mid-range concrete pump

*The economical way to place 1½" aggregate concrete pump mixes.*



- Volume output from 0 to 55 cubic yards (42 m<sup>3</sup>) per hour
- Shotcreting (wetgunning)
- Slabs
- Decks
- Footings
- Chemical/organic slurries
- Compaction grouting



The ST-55, with its powerful ability to handle the toughest shotcrete mixes, enables a swimming pool contractor to apply shotcrete to two pools a day.

## Features

- Remixer/agitator hopper — standard
- Engine cover (hood) standard
- Versatility — handles low cement/sand mixes up to 1½" aggregate
- Easily removed hopper for quick maintenance
- Infinite volume control from 0 to 55 cubic yards per hour
- Extra heavy duty main frame
- Reverse pumping for instant response and smoother operation
- Hydraulic surge brakes
- Exclusive full-flow shuttle-tube concrete valve — more efficient operation
- One-man operation — simple controls

## Options

- Wireless remote control
- Air or electric vibrators for hopper screen
- High pressure water (wash-out) pump
- Rear hydraulic outriggers

# Mayco ST-70TDRM Mid-range concrete pump

**The contractor's choice.**



## Features

- Volume output from 0 to 70 cubic yards (54 m<sup>3</sup>) per hour
- Shotcreting (wetgunning)
- Slabs
- Decks
- Footings
- Chemical/organic slurries
- Compaction grouting

- Hydraulic pressure — 900 psi
- Engine cover (hood) standard
- Versatility — handles low cement/sand mixes up to 1½" aggregate
- Remixer/agitator hopper — standard
- Easily removed hopper for quick maintenance
- Infinitely variable volume control from 0 to 70 cubic yards per hour
- Extra heavy duty main frame
- Reverse pumping for instant response and smoother operation
- Hydraulic surge brakes
- Exclusive full-flow shuttle-tube concrete valve — more efficient operation
- One-man operation — simple controls

## Options

- Wireless remote control
- Air or electric vibrators for hopper screen
- Rear hydraulic outriggers



Shotcreting (wetgunning) with a stiff, low slump mix, is just one of the many uses for the ST-70 concrete pump.



Low slump? Tough, rocky mixes? Hard to reach areas? The versatile ST-70TDRM handles it all!



Drilling applications — Pumping up 80 feet and down 150 feet is easy for the Mayco ST-70TDRM.

## Specifications — ST-45, ST-55, ST-70 Concrete Pumps

	ST-45	ST-55HRM	ST-70TRM***
<b>PERFORMANCE</b>			
Volume Output — yds./hr. (m <sup>3</sup> /hr)*	0 to 45 (0 to 35)*	0 to 55 (0 to 42)*	0 to 70 (0 to 54)*
Maximum aggregate size — in. (mm)*	1½ (38)	1½ (38)	1½ (38)
Vertical pumping distance — ft. (m)*	250 (76)	300 (91)	300 (91)
Horizontal pumping distance — ft. (m)*	1,000 (305)	1,200 (336)	1,200 (336)
Maximum concrete pressure — PSI (bar)*	875 (60)	900 (62)	900 (62)
<b>ENGINE</b>			
Engine, HP (kW)	Hatz diesel 3M40L — 57 (42) Deutz diesel F4L1011F — 60 (44) Deutz turbo diesel BF4L1011F — 75.5 (56)	Hatz diesel 4M40L — 80 (59.7)	Deutz turbo diesel BF4L913 — 106 (79)
Concrete cylinders — in. (mm)	6 x 27 (152 x 686)	6 x 39 (152 x 991)	6 x 39 (152 x 991)
Hydraulic cylinders — in. (mm)	3 x 27 (76 x 686)	3 x 39 (76 x 991)	3 x 39 (76 x 991)
Engine cover (hood)	Standard	Standard	Standard
Hydraulic oil capacity — gal. (liter)	58 (219)	58 (219)	58 (219)
Hydraulic oil cooler	Standard, with fan	Standard, with fan	Standard, with fan
Pump outlet — in. (mm)	5 (127) HD	5 (127) HD	5 (127) HD
Hopper remixer	Standard	Standard	Standard
Hopper height — in. (mm)	42 (1067)	42 (1067)	42 (1067)
Hopper capacity — cu. ft. (liter)	10 (283)	10 (283)	10 (283)
Fuel tank capacity — gal. (liters)	17 (64)	17 (64)	17 (64)
Brakes	Hydraulic surge type	Hydraulic surge type	Hydraulic surge type
<b>DIMENSIONS</b>			
L x W x H — in. (cm)	140 x 67 x 54 (356 x 170 x 137)	149 x 67 x 55 (378 x 170 x 140)	149 x 67 x 55 (378 x 170 x 140)
Weight — lb. (kg)	4,206 (1907)	4,700 (2132)	4,900 (2222)
<b>OPTIONS</b>			
	Rear hydraulic outriggers Hopper screen vibrator Wireless remote control Skid mount	Rear hydraulic outriggers Radio remote control Hopper screen vibrator Skid mount	Rear hydraulic outriggers Radio remote control Hopper screen vibrator Skid mount

\* These figures will vary due to concrete mix design, line size, job-site conditions and engine options.

\*\*\* ST-70 is also available in a Scaled Down version: **ST-70SD**

**High Pressure — Up to 1467 psi**

**Volume Output — 0 to 30+ cubic yards per hour**

Scaled Down versions are designed to handle ¾" minus aggregate mixes and low cement/sand slurries. Utilizing 4½" I.D. material cylinders and a 4" pump outlet, these pumps are best suited to the contractor who tackles the heavy duty shotcreting (wetgunning) applications. The higher piston face pressure and variable output make the Scaled Down versions ideally suited for compaction grouting, mud-jacking, slab-jacking, pressure grouting, refractory and more.



# Specifications for Mayco C-30HDN Small line concrete pump

## Performance

Pumping Rate .....	25 cu. yds. per hour
Maximum Aggregate Size .....	½" minus (12 mm)
Vertical Pumping Height .....	Excess of 150 ft. (46 m)
Horizontal Pumping Distance .....	500 ft. (152 m)

## Engineering

Engine .....	39 HP Nissan A15 Gasoline Powered or 30 HP Deutz Diesel Powered
Pump .....	Reciprocating piston
Remote Control .....	Standard
Hopper Capacity .....	6 cu. ft.
Material Hose .....	2", 2½"

## Dimensions

L x W x H .....	12 ft. x 4½ ft. x 4½ ft.
Weight .....	2,831 lbs.
Tire Size .....	7.35 - 14

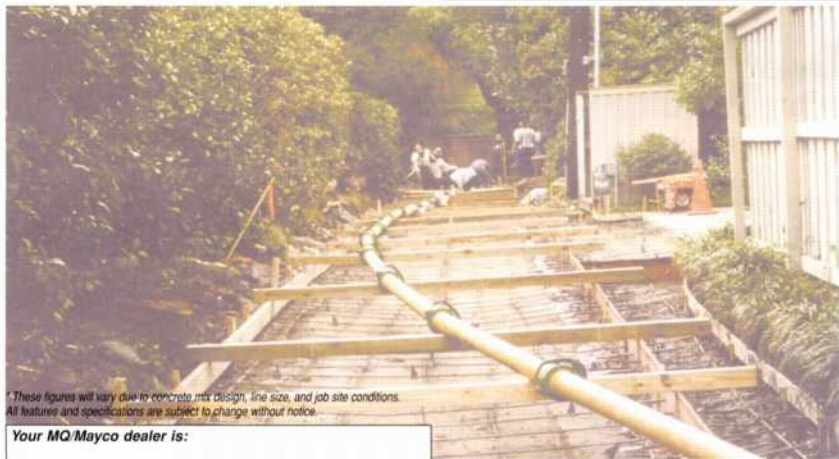
## Optional Equipment

Air vibrator mounted to hopper screen • Diesel engine  
Skid mount • Electric motor • Wireless remote control  
Wetgun nozzle • Reducers • Steel pipe • Couplings  
Concrete/grout hose

**We carry a complete line of hose, pipe, elbows, couplings, reducers and shotcrete accessories.**

### Scaled Down model available

The C-30HDMG incorporates a "scaled down" manifold and 4½" diameter pistons and cylinders. The unit will deliver up to 13 cubic yards per hour and can handle brick mortar as well as ½" minus aggregate mixes in excess of 200 feet vertical with a maximum of 800 PSI.



\*These figures will vary due to concrete mix design, line size, and job site conditions.  
All features and specifications are subject to change without notice.

Your MQ/Mayco dealer is:

**NORTHWEST EQUIPMENT**  
2011 SO 341ST PLACE  
FEDERAL WAY WA 98003

**1-800-717-1338**



**MULTIQUIP INC.**  
POST OFFICE BOX 6254  
CARSON, CALIFORNIA 90749  
310-537-3700 • 800-421-1244  
FAX: 310-537-3927  
E-MAIL: mq@multiquip.com  
WWW: multiquip.com

Atlanta • Boise • Dallas • Newark  
Quebec, Canada • Manchester, UK • Rio de Janeiro, BR • Guadalajara, MX